

Male Test Adapters

These handy test Adapters can be used for a variety of applications including tapping into your hydraulic system for pressure readings. Will fit most bleed screw openings.

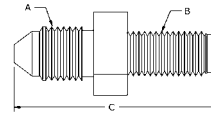
FEATURES:

- Imperial & Metric Threads
- Take off point are universal JIC ends
- Zinc plated for corrosion resistance

Assortment kit available.
To order see Part No.

BQ7010.

See page 9 for Assortment Kit



PART NO.	A	B	C
BQ128	3/8" x 24NF (No. 3 JIC)	M10 x 1.25	36mm
BQ129	3/8" x 24NF (No. 3 JIC)	M10 x 1.00	36mm
BQ130	3/8" x 24NF (No. 3 JIC)	M10 x 1.5	60mm
BQ131	7/16" x 20NF (No. 4 JIC)	3/8" x 24NF	37mm
BQ132	3/8" x 24NF (No. 3 JIC)	1/4" x 28NF	36mm
BQ133	3/8" x 24NF (No. 3 JIC)	5/16" x 24NF	36mm
BQ134	7/16" x 20NF (No. 4 JIC)	7/16" x 24NS	37mm
BQ135	3/8" x 24NF (No. 3 JIC)	3/8" x 24NF	36mm
BQ144	7/16" x 20NF (No. 4 JIC)	M12 x 1.00	37mm
BQ145	7/16" x 20NF (No. 4 JIC)	M10 x 1.00	30mm
BQ157	3/8" x 24NF (No. 3 JIC)	1/8" x 28BSPP	30mm

Bleed Screws

These popular bleed screws makes replacement easy.

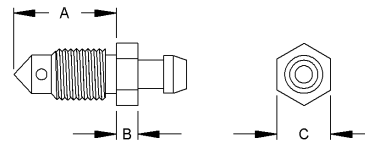
FEATURES:

- Heavy duty hex allows for good gripping
- Zinc plated for corrosion resistance
- Imperial & Metric Threads

Assortment kit available.
To order see Part No.

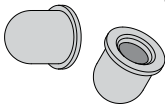
BQ7014.

See page 9 for Assortment Kit



PART NO.	THREAD	A	B	C
BQ4433	3/8" x 24NF	20mm	5mm	10mm
BQ4434	M10 x 1	23mm	6mm	10mm
BQ4435	M10 x 1	19mm	6mm	10mm
BQ4438	5/16" x 24NF	17.5mm	5mm	5/16"
BQ4439	1/4" x 28NF	15mm	5mm	1/4"
BQ4440	M10 x 1.5	18mm	5mm	10mm
BQ4441	M7 x 1	22mm	5mm	1/4"
BQ4442	M8 x 1.25	22mm	5mm	8mm
BQ4443	M8 x 1	18mm	5mm	8mm
BQ4444	7/16" x 24NS	24mm	5mm	7/16"
BQ4445	7/16" x 20NF	21mm	5mm	7/16"
BQ4446	M10 x 1.25	21mm	5mm	10mm

Bleeder Caps



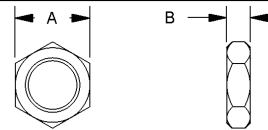
BQ315 (Small)
BQ316 (Large)

Bulkhead Nuts

The biggest range of brake hose bulkhead nuts in the country.

FEATURES:

- Zinc plated for corrosion resistance
- Imperial & Metric Threads
- Heavy duty construction



PART NO.	THREAD	A	B
BQ13	5/8" x 18NF	15/16"	8mm
BQ75	7/8" x 14NF	1-1/8"	8mm
BQ77	11/16" x 16NF	1"	8mm
BQ78	3/8" x 24NF	1/2"	5mm
BQ79	M10 x 1	13mm	5mm
BQ80	7/16" x 20NF	5/8"	6mm
BQ81	M12 x 1	19mm	6mm
BQ82	M12 x 1.5	19mm	6mm
BQ83	1/2" x 20NF	3/4"	6mm
BQ84	3/4" x 16NF	1-1/16"	8mm
BQ85	M20 x 1.5	27mm	8mm
BQ86	M18 x 1.5	25mm	8mm
BQ87	M16 x 1.5	22mm	7mm
BQ88	M14 x 1.5	19mm	6mm
BQ89	7/8" x 18NS	1-1/8"	8mm