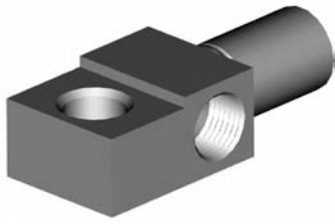


IMPERIAL FEMALE FITTINGS

BOLT ON MOUNT

HFIF57



8/10mm Hole

THREAD	SEAT	MOUNT	HOLE	OAL	FITS
7/16"NS x 2	Inverted	Bolted	8/10mm	54mm	US

HFIF58



11.5mm Hole

THREAD	SEAT	MOUNT	HOLE	OAL	FITS
3/8"NF x 2	Inverted	Bolted	11.5mm	50mm	US

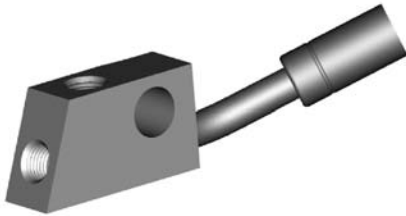
HFIF59



12mm Hole

THREAD	SEAT	MOUNT	HOLE	OAL	FITS
3/8"NF x 2	Inverted	Bolted	12mm	100mm	US

HFIF66



12mm Hole

THREAD	SEAT	MOUNT	HOLE	OAL	FITS
3/8"NF x 2	Inverted	Bolted	12mm	93mm	US

HFIF77



THREAD	SEAT	MOUNT	HOLE	OAL	FITS
1/2"NF	Inverted	Bolted	6mm	42mm	US

HFIF80



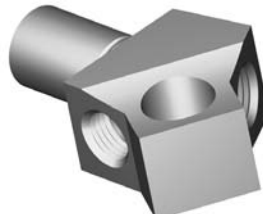
THREAD	SEAT	MOUNT	HOLE	OAL	FITS
3/8"NF x 2	Inverted	Bolted	11.8mm	52mm	US

HFIF88



THREAD	SEAT	MOUNT	HOLE	OAL	FITS
3/8"NF	Inverted	Bolted	11.6mm	51mm	US

HFIF110



THREAD	SEAT	MOUNT	HOLE	OAL	FITS
3/8"NF x 2	Inverted	Bolted	12mm	-	US

HFIF115



THREAD	SEAT	MOUNT	HOLE	OAL	FITS
7/16"NS x 2	Inverted	Bolted	12mm	57mm	US

HFIF303

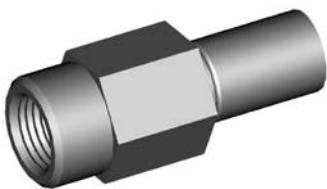


11.4mm Hole

THREAD	SEAT	MOUNT	HOLE	OAL	FITS
3/8"NF-7/16"NS	Inverted	Bolted	7/16"	70mm	US

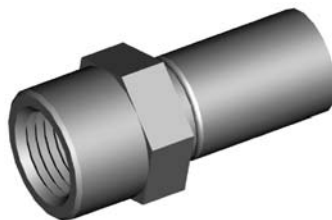
NO MOUNT

HFIF03



THREAD	SEAT	MOUNT	HEX	OAL	FITS
1/2"NF	DPS	-	19mm	50mm	US

HFIF06



THREAD	SEAT	MOUNT	HEX	OAL	FITS
1/2"NF	Inverted	-	17mm	38mm	UNI

A = Asian

EU = European

US = United States

UNI = Universal

V = Various