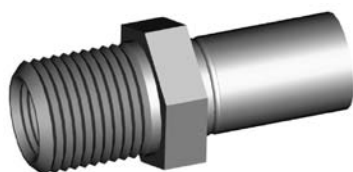


# IMPERIAL FEMALE FITTINGS

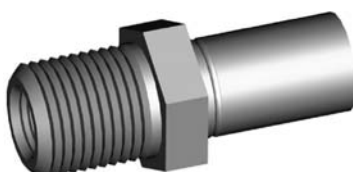
## HFIFX01



5/8NF External Thread

THREAD	SEAT	MOUNT	HEX	OAL	FITS
7/16"NS	Inverted	Bulkhead	19mm	45mm	V

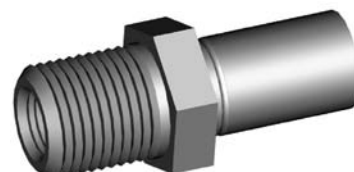
## HFIFX02



5/8NF External Thread

THREAD	SEAT	MOUNT	HEX	OAL	FITS
3/8"NF	Inverted	Bulkhead	19mm	45mm	V

## HFIFX03



5/8NF External Thread

THREAD	SEAT	MOUNT	HEX	OAL	FITS
3/8"BSF	Inverted	Bulkhead	19mm	45mm	V

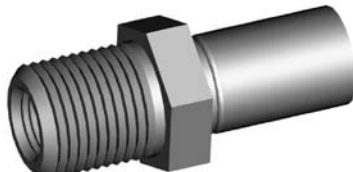
## HFIFX04



5/8NF External Thread

THREAD	SEAT	MOUNT	HEX	OAL	FITS
7/16"NF	Inverted	Bulkhead	19mm	45mm	V

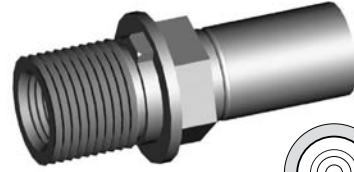
## HFIFX05



5/8NF External Thread

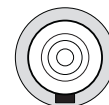
THREAD	SEAT	MOUNT	HEX	OAL	FITS
3/8"NF	DPS	Bulkhead	19mm	45mm	V

## HFIFX06

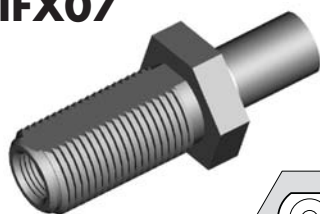


5/8NF External Thread

THREAD	SEAT	MOUNT	HEX	OAL	FITS
7/16"NS	Inverted	Bulkhead	16mm	46mm	US

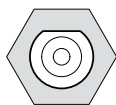


## HFIFX07

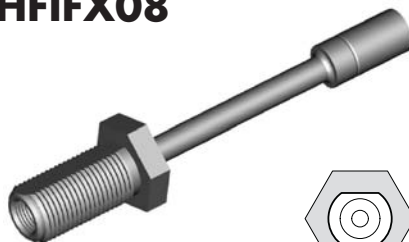


3/4NF External Thread

THREAD	SEAT	MOUNT	HEX	OAL	FITS
7/16"NS	Inverted	Bulkhead	25mm	65mm	US

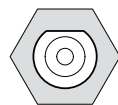


## HFIFX08



3/4NF External Thread

THREAD	SEAT	MOUNT	HEX	OAL	FITS
7/16"NS	Inverted	Bulkhead	25mm	135mm	US



## HFIFX09



11/16NS External Thread

THREAD	SEAT	MOUNT	HEX	OAL	FITS
1/2"NF	Inverted	Bulkhead	22mm	46mm	US

## HFIFX10



5/8NF External Thread

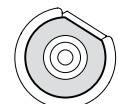
THREAD	SEAT	MOUNT	HEX	OAL	FITS
3/8"NF	Inverted	Bulkhead	22mm	117mm	US

## HFIFX11



5/8NF External Thread

THREAD	SEAT	MOUNT	HEX	OAL	FITS
3/8"NF	Inverted	Bulkhead	19mm	48mm	US

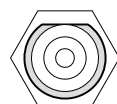


## HFIFX12

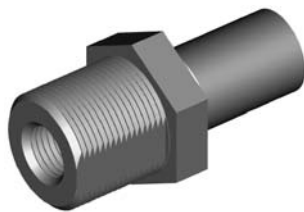


5/8NF External Thread

THREAD	SEAT	MOUNT	HEX	OAL	FITS
7/16"NS	Inverted	Bulkhead	22mm	54mm	US



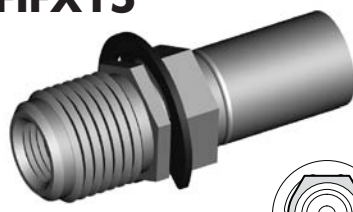
## HFIFX14



3/4NF External Thread

THREAD	SEAT	MOUNT	HEX	OAL	FITS
3/8"NF	Inverted	Bulkhead	22mm	45mm	US

## HFIFX15



5/8NF External Thread

THREAD	SEAT	MOUNT	HEX	OAL	FITS
3/8"NF	Inverted	Bulkhead	16mm	47mm	US



## HFIFX16



3/4NF External Thread

THREAD	SEAT	MOUNT	HEX	OAL	FITS
7/16"NS	Inverted	Bulkhead	22mm	45mm	US

BULKHEAD MOUNT

A = Asian

EU = European

US = United States

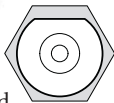
UNI = Universal

V = Various

# IMPERIAL FEMALE FITTINGS

BULKHEAD MOUNT

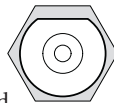
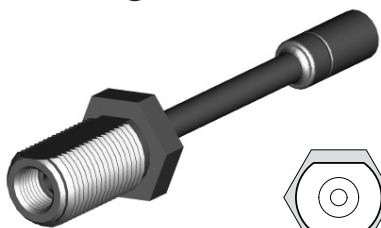
## HFIFX17



7/8NF External Thread

THREAD	SEAT	MOUNT	HEX	OAL	FITS
1/2"NF	Inverted	Bulkhead	27mm	65mm	US

## HFIFX18



7/8NF External Thread

THREAD	SEAT	MOUNT	HEX	OAL	FITS
1/2"NF	Inverted	Bulkhead	27mm	135mm	US

## HFIFX20

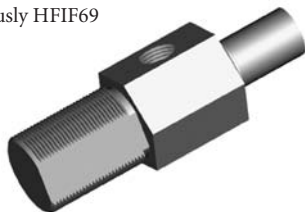


5/8NF External Thread

THREAD	SEAT	MOUNT	HEX	OAL	FITS
1/8"NPT	-	Bulkhead	19mm	45mm	US

## HFIFX21

Previously HFIF69

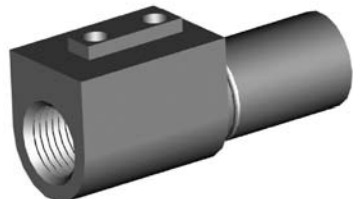


7/8" x 18NS External Thread

THREAD	SEAT	MOUNT	HEX	OAL	FITS
7/16"NS x 2	Inverted	Bulkhead	25mm	80mm	US

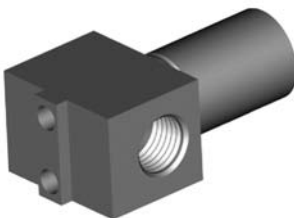
BRACKET MOUNT

## HFIF15



THREAD	SEAT	MOUNT	HEX	OAL	FITS
3/8"NF	Inverted	Bracket	-	46mm	US

## HFIF22



THREAD	SEAT	MOUNT	HEX	OAL	FITS
3/8"NF x 2	Inverted	Bracket	-	41mm	US

## HFIF41



THREAD	SEAT	MOUNT	HEX	OAL	FITS
3/8"NF	Inverted	Bracket	-	50mm	US

## HFIF42



THREAD	SEAT	MOUNT	HEX	OAL	FITS
3/8"NF	Inverted	Bracket	-	50mm	US

## HFIF44



THREAD	SEAT	MOUNT	HEX	OAL	FITS
3/8"NF x 2	Inverted	Bracket	-	50mm	US

## HFIF52



THREAD	SEAT	MOUNT	HEX	OAL	FITS
7/16"NS	Inverted	Bracket	-	46mm	US

## HFIF60



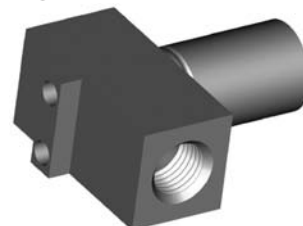
THREAD	SEAT	MOUNT	HEX	OAL	FITS
3/8"NF x 2	Inverted	Bracket	-	102mm	US

## HFIF70



THREAD	SEAT	MOUNT	HEX	OAL	FITS
3/8"NF x 2	Inverted	Bracket	-	48mm	US

## HFIF81



THREAD	SEAT	MOUNT	HEX	OAL	FITS
3/8"NF	Inverted	Bracket	-	38mm	US

A = Asian

EU = European

US = United States

UNI = Universal

V = Various