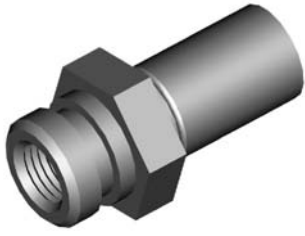


IMPERIAL FEMALE FITTINGS

HFIF01



THREAD	SEAT	MOUNT	HEX	OAL	FITS
3/8"NF	Inverted	Clip	19mm	38mm	V

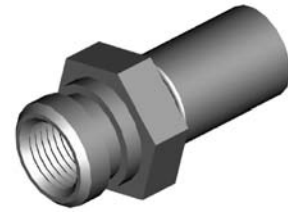
HFIF01B



Brass

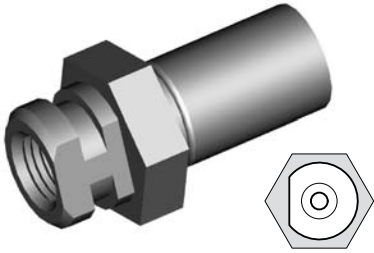
THREAD	SEAT	MOUNT	HEX	OAL	FITS
3/8"NF	Inverted	Clip	17mm	38mm	V

HFIF02



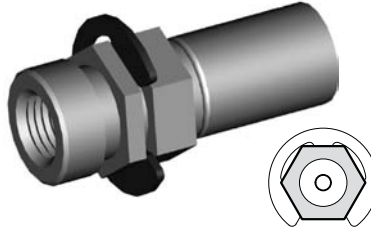
THREAD	SEAT	MOUNT	HEX	OAL	FITS
7/16"NS	Inverted	Clip	19mm	38mm	V

HFIF05



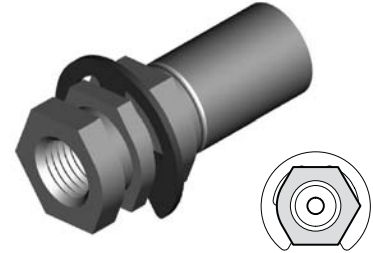
THREAD	SEAT	MOUNT	HEX	OAL	FITS
3/8"NF	Inverted	Clip	19mm	38mm	V

HFIF07



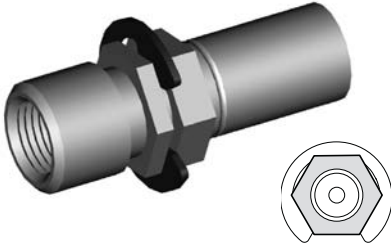
THREAD	SEAT	MOUNT	HEX	OAL	FITS
3/8"NF	Inverted	Clip	16mm	41mm	US

HFIF08



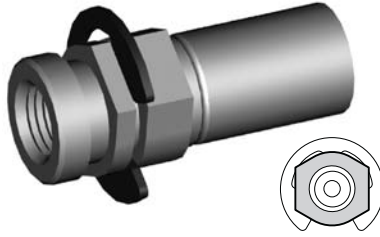
THREAD	SEAT	MOUNT	HEX	OAL	FITS
3/8"NF	Inverted	Clip	16mm	41mm	US

HFIF09



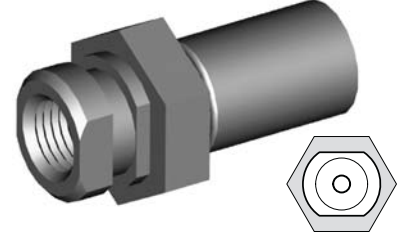
THREAD	SEAT	MOUNT	HEX	OAL	FITS
7/16"NS	Inverted	Clip	16mm	45mm	US

HFIF10



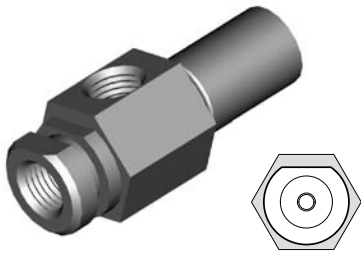
THREAD	SEAT	MOUNT	HEX	OAL	FITS
3/8"NF	Inverted	Clip	16mm	39mm	US

HFIF11



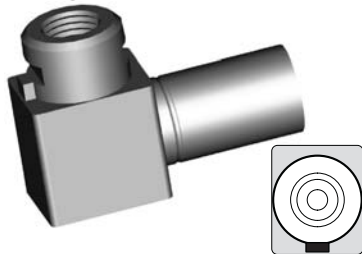
THREAD	SEAT	MOUNT	HEX	OAL	FITS
3/8"NF	Inverted	Clip	19mm	38mm	V

HFIF14



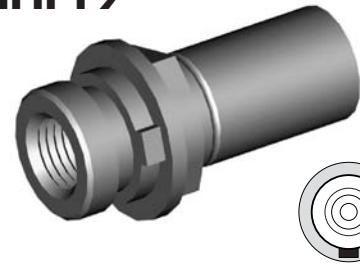
THREAD	SEAT	MOUNT	HEX	OAL	FITS
3/8"NF x2	Inverted	Clip	19mm	50mm	US

HFIF18



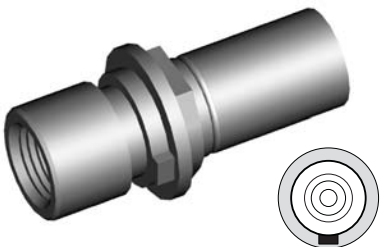
THREAD	SEAT	MOUNT	HEX	OAL	FITS
3/8"NF	Inverted	Clip	-	41mm	US

HFIF19



THREAD	SEAT	MOUNT	HEX	OAL	FITS
3/8"NF	Inverted	Clip	16mm	38mm	US

HFIF20



THREAD	SEAT	MOUNT	HEX	OAL	FITS
7/16"NS	Inverted	Clip	16mm	44mm	US

HFIF21



THREAD	SEAT	MOUNT	HEX	OAL	FITS
3/8"NF	DPS	Clip	16mm	37mm	US

HFIF24



THREAD	SEAT	MOUNT	HEX	OAL	FITS
7/16"NS	Inverted	Clip	16mm	40mm	US

CLIP MOUNT

A = Asian

EU = European

US = United States

UNI = Universal

V = Various

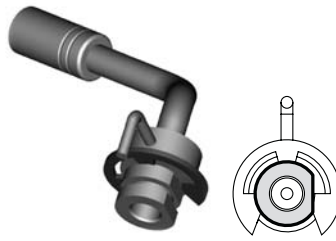
IMPERIAL FEMALE FITTINGS

HFIF26



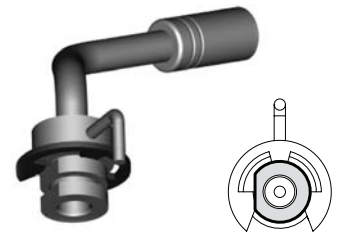
THREAD	SEAT	MOUNT	HEX	OAL	FITS
3/8"NF	Inverted	Clip	16mm	40mm	US

HFIF29



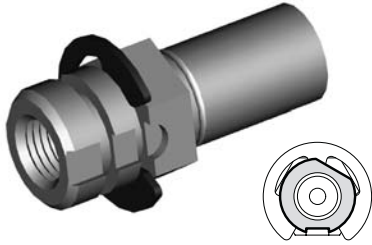
THREAD	SEAT	MOUNT	HEX	OAL	FITS
3/8"NF	Inverted	Clip	-	78mm	US

HFIF30



THREAD	SEAT	MOUNT	HEX	OAL	FITS
3/8"NF	Inverted	Clip	-	78mm	US

HFIF32



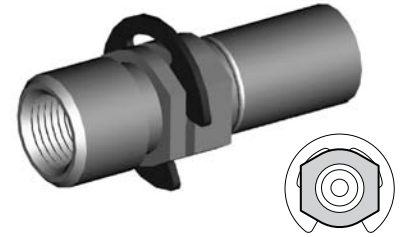
THREAD	SEAT	MOUNT	HEX	OAL	FITS
3/8"NF	Inverted	Clip	17mm	41mm	US

HFIF33



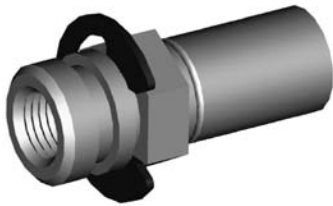
THREAD	SEAT	MOUNT	HEX	OAL	FITS
7/16"NS	Inverted	Clip	17mm	41mm	US

HFIF35



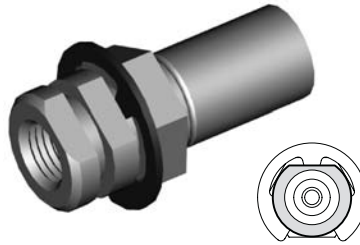
THREAD	SEAT	MOUNT	HEX	OAL	FITS
7/16"NS	Inverted	Clip	16mm	46mm	US

HFIF36



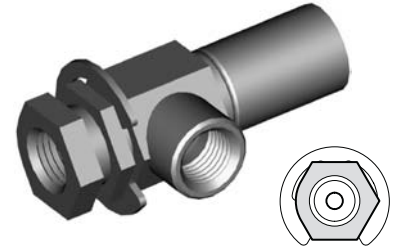
THREAD	SEAT	MOUNT	HEX	OAL	FITS
3/8"NF	Inverted	Clip	16mm	39mm	US

HFIF38



THREAD	SEAT	MOUNT	HEX	OAL	FITS
3/8"NF	Inverted	Clip	17mm	40mm	US

HFIF40



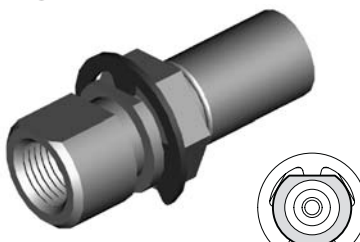
THREAD	SEAT	MOUNT	HEX	OAL	FITS
3/8"NF x 2	Inverted	Clip	16mm	48mm	US

HFIF45



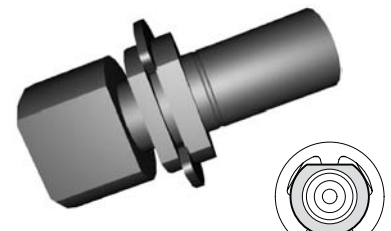
THREAD	SEAT	MOUNT	HEX	OAL	FITS
3/8"NF	Inverted	Clip	16mm	39mm	US

HFIF51



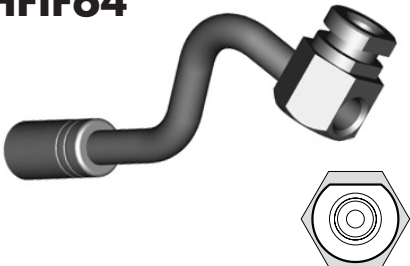
THREAD	SEAT	MOUNT	HEX	OAL	FITS
7/16"NS	Inverted	Clip	17mm	46mm	US

HFIF63



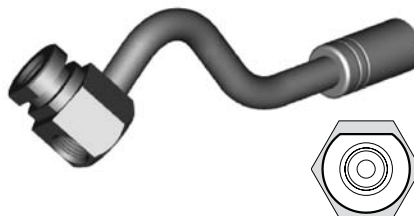
THREAD	SEAT	MOUNT	HEX	OAL	FITS
1/2"NF	Inverted	Clip	-	47mm	US

HFIF64



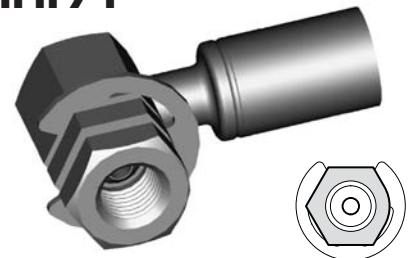
THREAD	SEAT	MOUNT	HEX	OAL	FITS
3/8"NF x 2	Inverted	Clip	19mm	137mm	US

HFIF65



THREAD	SEAT	MOUNT	HEX	OAL	FITS
3/8"NF x 2	Inverted	Clip	19mm	137mm	US

HFIF71



THREAD	SEAT	MOUNT	HEX	OAL	FITS
3/8"NF	Inverted	Clip	16mm	45mm	US

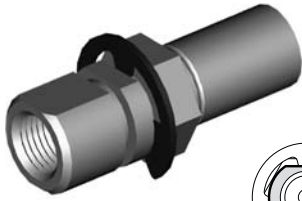
CLIP MOUNT

A = Asian EU = European US = United States UNI = Universal V = Various

IMPERIAL FEMALE FITTINGS

CLIP MOUNT

HFIF72



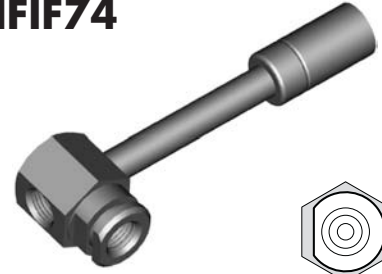
THREAD	SEAT	MOUNT	HEX	OAL	FITS
3/8"NF	Inverted	Clip	17mm	47mm	US

HFIF73



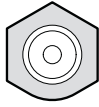
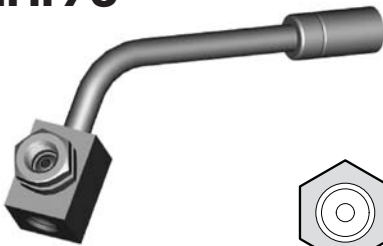
THREAD	SEAT	MOUNT	HEX	OAL	FITS
7/16"NS	Inverted	Clip	17mm	47mm	US

HFIF74



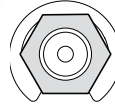
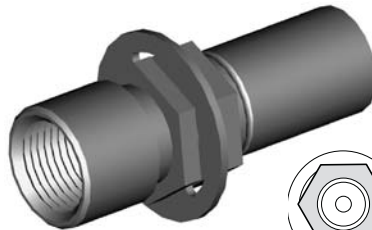
THREAD	SEAT	MOUNT	HEX	OAL	FITS
3/8"NF x 2	Inverted	Clip	19mm	92mm	US

HFIF76



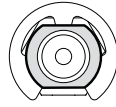
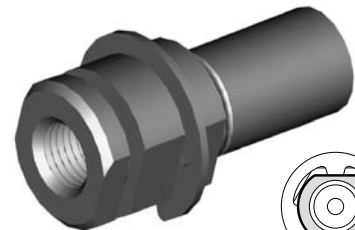
THREAD	SEAT	MOUNT	HEX	OAL	FITS
3/8"NF x 2	Inverted	Clip	16mm	90mm	US

HFIF79



THREAD	SEAT	MOUNT	HEX	OAL	FITS
1/2"NF	Inverted	Clip	16mm	45mm	US

HFIF82



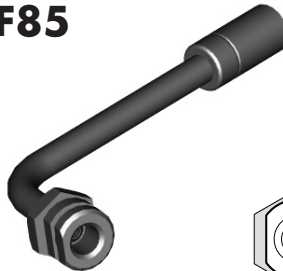
THREAD	SEAT	MOUNT	HEX	OAL	FITS
3/8"NF	Inverted	Clip	-	40mm	US

HFIF83



THREAD	SEAT	MOUNT	HEX	OAL	FITS
3/8"NF	Inverted	Clip	16mm	55mm	US

HFIF85



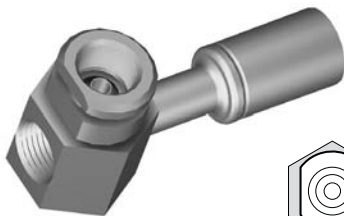
THREAD	SEAT	MOUNT	HEX	OAL	FITS
3/8"NF	Inverted	Clip	17.5mm	-	US

HFIF87



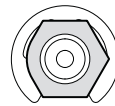
THREAD	SEAT	MOUNT	HEX	OAL	FITS
3/8"NF x 2	Inverted	Clip	17.5mm	50mm	US

HFIF107



THREAD	SEAT	MOUNT	HEX	OAL	FITS
3/8"NF x 2	Inverted	Clip	19mm	57mm	US

HFIF301



THREAD	SEAT	MOUNT	HEX	OAL	FITS
3/8"NF	Inverted	Clip	16mm	43mm	US

A = Asian

EU = European

US = United States

UNI = Universal

V = Various