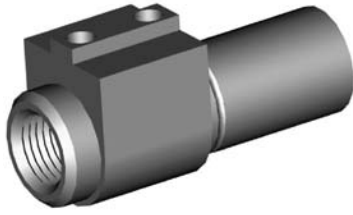


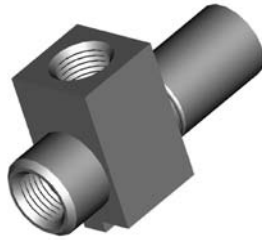
# METRIC FEMALE FITTINGS

## HFMF40



THREAD	SEAT	MOUNT	HEX	OAL	FITS
M10 x 1	DPS	Bracket	-	42mm	US

## HFMF41



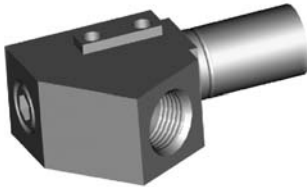
THREAD	SEAT	MOUNT	HEX	OAL	FITS
M10x1-(2)	DPS	Bracket	-	44mm	US

## HFMF70



THREAD	SEAT	MOUNT	HEX	OAL	FITS
M10x1-(2)	DPS	Bracket	-	54mm	US

## HFMF311



THREAD	SEAT	MOUNT	HEX	OAL	FITS
M12 x 1	DPS	Bracket	-	55mm	US

## HFMF312



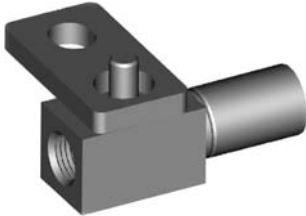
THREAD	SEAT	MOUNT	HEX	OAL	FITS
M10 x 1	DPS	Bracket	-	55mm	US

## HFMF313



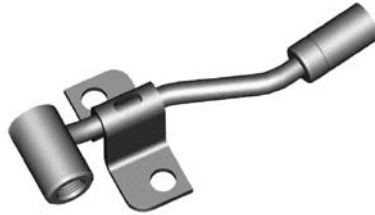
THREAD	SEAT	MOUNT	HEX	OAL	FITS
M12 x 1	DPS	Bracket	-	48mm	US

## HFMF317



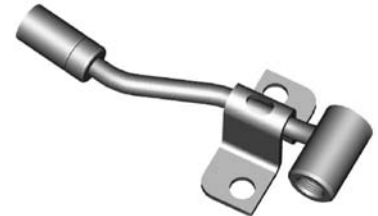
THREAD	SEAT	MOUNT	HEX	OAL	FITS
M10 x 1	Inverted	Bracket	-	48mm	A

## HFMF318



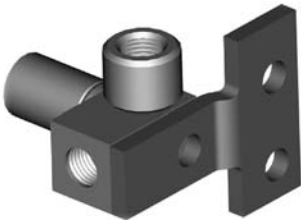
THREAD	SEAT	MOUNT	HEX	OAL	FITS
M10 x 1	Inverted	Bracket	-	115mm	A

## HFMF319



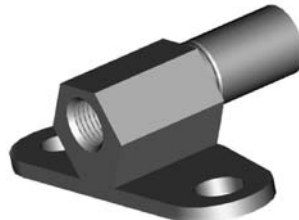
THREAD	SEAT	MOUNT	HEX	OAL	FITS
M10 x 1	Inverted	Bracket	-	115mm	A

## HFMF320



THREAD	SEAT	MOUNT	HEX	OAL	FITS
M10 x 1	Inverted	Bracket	-	38mm	A

## HFMF324



THREAD	SEAT	MOUNT	HEX	OAL	FITS
M10 x 1	Inverted	Bracket	-	46mm	A

## HFMF325



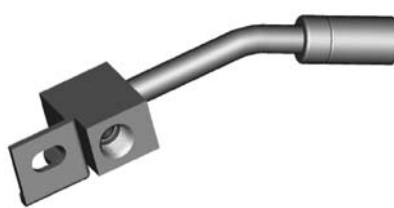
THREAD	SEAT	MOUNT	HEX	OAL	FITS
M10 x 1	Inverted	Bracket	-	45mm	A

## HFMF342



THREAD	SEAT	MOUNT	HEX	OAL	FITS
M10 x 1	Inverted	Bracket	-	100mm	A

## HFMF343



THREAD	SEAT	MOUNT	HEX	OAL	FITS
M10 x 1	Inverted	Bracket	-	100mm	A

BRACKET MOUNT

A = Asian

EU = European

US = United States

UNI = Universal

V = Various