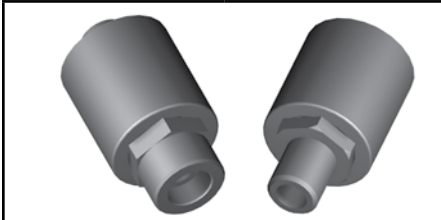


Repair Power Steering Hoses...Easily

Repair failed power steering hoses economically and quickly. Simply re-use the existing end fittings to replace the failed rubber hose utilizing BrakeQuip's uniquely designed crimp fittings.

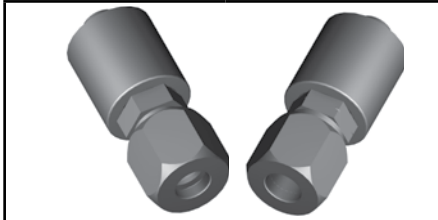


Braze Fittings



PART NO.	SIZE
PSHF101	3/8"
PSHF102	10mm
PSHF105	11mm

Compression Fittings



PART NO.	SIZE
PSHF103	3/8"
PSHF104	10mm

Female Swivel Fittings



PART NO.	THREAD
PSHF106	9/16" x 18NF

To be used in conjunction with BQ226 (3/8") and BQ227 (10mm) braze on fittings.

High Pressure Power Steering Hose



BQ330

ID SIZE	OD SIZE	WORKING PRESSURE	MIN. BURST PRESSURE	MIN. BEND RADIUS
3/8"	18mm	1,500 psi	6,000 psi	3-1/4"

Temperature Range: -40°F to +300°F (-40°C to +150°C)

This hose has a high temperature rating and is compatible with most power steering oils. High expansion for noise resistance. Complies with SAE J2050 standards.

Low Pressure Power Steering Hose



BQ331

ID SIZE	OD SIZE	WORKING PRESSURE	MIN. BURST PRESSURE	MIN. BEND RADIUS
3/8"	16.25mm	300 psi	1,200 psi	3"

Temperature Range: -40°F to +300°F (-40°C to +150°C)

This hose has a high temperature rating and is compatible with most power steering oils. Fabric cover to distinguish it and for flexibility. Complies with SAE J1019 standards.

Flow Restrictor



BQ801

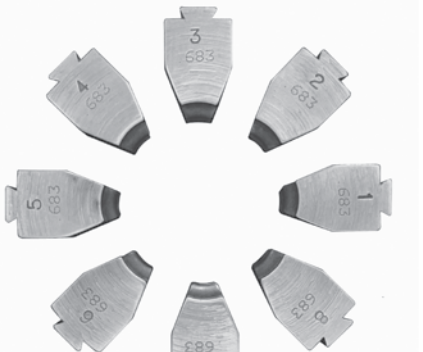
This flow restrictor is mainly used on smaller cars and in particular Asian & European vehicles. Its purpose is to restrict flow to eliminate power steering noise.

Center Support for Hose Clamp



PSHF100

Designed to slide onto hose and be lightly crimped.



BQ2090

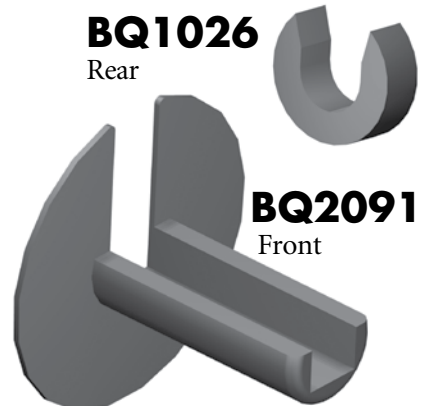
Power Steering Dies

Suits **BQ1005** machine. Crimp dies available for other crimping machines.



BQ7003

Power Steering Adaptor Kit



BQ1026

Rear

BQ2091

Front

Crimp Setting Tools

For power steering hoses.